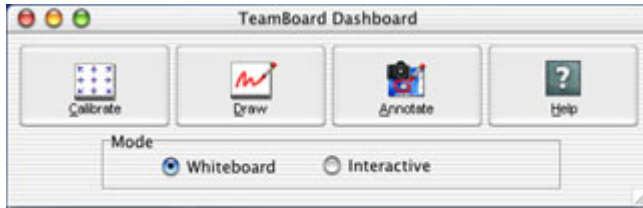


Macintosh Quick Start Guide (side 1 of 2)

A: TeamBoard Dashboard and Modes

A.1: Displaying the TeamBoard Dashboard

TeamBoard Dashboard is a command console with quick access to TeamBoard features and applications.



- Click the TeamBoard Dashboard icon on the Dock



A.2: TeamBoard Modes

Switch modes by selecting a Mode on the TeamBoard Dashboard.

- *Whiteboard* mode captures notes and drawings into the computer and **does not require a projector**.
- *Interactive* mode enables TeamBoard as an interactive touch screen and **requires a projector**.

B: Using TeamBoard in Interactive Mode

B.1: Interactive Calibration



Before you perform Interactive calibration you must perform Whiteboard and ActionBar calibrations. In addition, a projector must be on and directed at the TeamBoard to perform Interactive Calibration.

1. Ensure your computer is on and that your projector is on.
2. Ensure that Whiteboard and ActionBar calibration have been done.
3. From the TeamBoard Dashboard select Calibrate and select the Interactive radio button.
4. Touch the points on the TeamBoard as indicated.
Ensure the red dot of each calibration point is touched as precisely as possible to ensure the TeamBoard is accurately calibrated. As each point is touched the next calibration point appears.

B.2: Using TeamBoard as a Touch Screen

1. Ensure your computer is on, and that your projector is on.
2. Ensure that Whiteboard, ActionBar and Interactive calibration have been done and switch into Interactive Mode.
You can now control your computer by touching the TeamBoard with your finger—it acts as the mouse. This allows you to do such things as give a PowerPoint presentation, Annotate, or Draw.

B.3: Annotating using TeamBoard

1. Select Annotate from the TeamBoard Dashboard.
2. Display the screen to annotate and press .
- An image of your screen is captured into Draw. The Fullscreen Mode toolbar appears.*
3. Select the Pen Type, Color, Size and mark up your snapshot, or, to return to Draw or Annotate click the appropriate button.
4. When finished annotating press .
- This captures the annotations to a page in TeamBoard Draw. You are returned to the application that was active when the annotation began.*
5. Repeat steps 2 to 4 to continue to annotate.
6. Select the Go to Draw button in any of the corners when done to go to Draw to save, print or otherwise edit annotations.



C: Capturing Notes without a projector

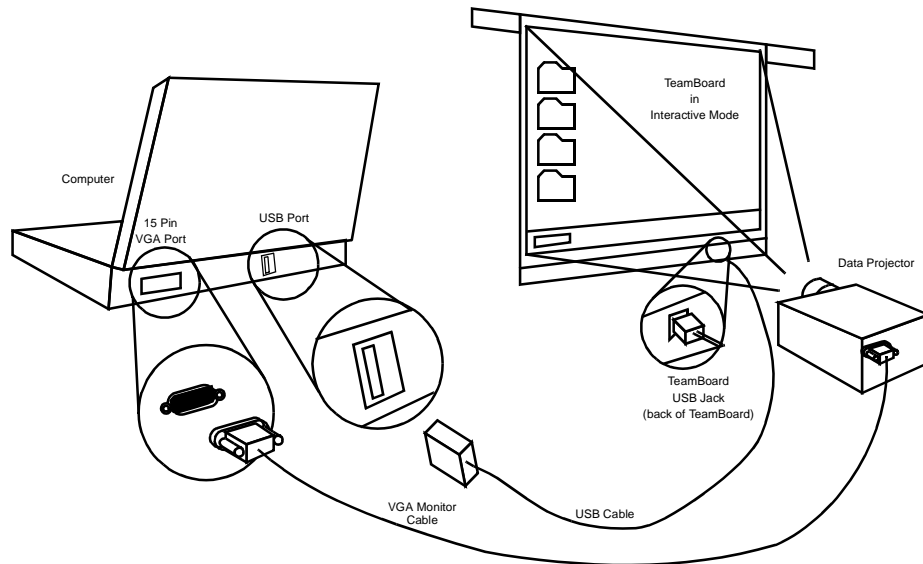
1. Ensure your computer is on, and that your projector is off.
2. Ensure that Whiteboard and ActionBar calibration have been done and switch into Whiteboard Mode.
3. Launch TeamBoard Draw from the TeamBoard Dashboard.
4. Press a pen button on the ActionBar in the color you want to use.
5. Using a dry-erase marker, draw on the TeamBoard.
Your computer monitor displays your work in the color you have chosen.
6. When finished, save your TeamBoard Draw file.

Macintosh Quick Start Guide (side 2 of 2)

D: Connecting TeamBoard Hardware

D.1: Hardware Connection Illustration

Your connections should be made in a manner similar to that displayed in the following image.



D.2: Hardware Connection Procedure

1. Attach one end of the USB Cable to the TeamBoard Controller at the back of the TeamBoard (bottom-right corner) and the other end to your computer.
2. Set up the data projector on an appropriate support surface, approximately 10 feet from the TeamBoard.
3. Connect one end of the VGA (monitor) cable to the data projector, and the other end to the 15-pin VGA port on the back of the computer.
4. Connect the data projector's power cord into the power outlet.
5. Turn on the projector and the computer.
6. Install TeamBoard software if required (see "E" on page 2).

E: Installing TeamBoard software

Ensure that software for TeamBoard has been installed on your computer. If you do not have the software, visit our website to download the most current version.

1. Ensure all hardware is correctly connected.
2. Insert the TeamBoard CD-ROM into your computer.
3. Follow the on-screen instructions.

F: Calibrating Your TeamBoard

F.1: Whiteboard Calibration

1. From the TeamBoard Dashboard select Calibrate and select the Whiteboard radio button.
2. From the TeamBoard, firmly press the top-left corner of the TeamBoard drawing surface and then the bottom-right corner.

F.2: ActionBar Calibration

1. From the TeamBoard Dashboard select Calibrate and select the ActionBar radio button.
2. From the TeamBoard, firmly press the top-left corner of the TeamBoard ActionBar and then the bottom-right corner.

F.3: Interactive Calibration

Before you perform Interactive calibration you must perform Whiteboard and ActionBar calibrations. In addition, a projector must be on and directed at the TeamBoard to perform Interactive Calibration.

1. Ensure your computer is on and that your projector is on.
2. Ensure that Whiteboard and ActionBar calibration have been done.
3. From the TeamBoard Dashboard select Calibrate and select the Interactive radio button.
4. Touch the points on the TeamBoard as indicated.
Ensure the red dot of each calibration point is touched as precisely as possible to ensure the TeamBoard is accurately calibrated. As each point is touched the next calibration point appears.