

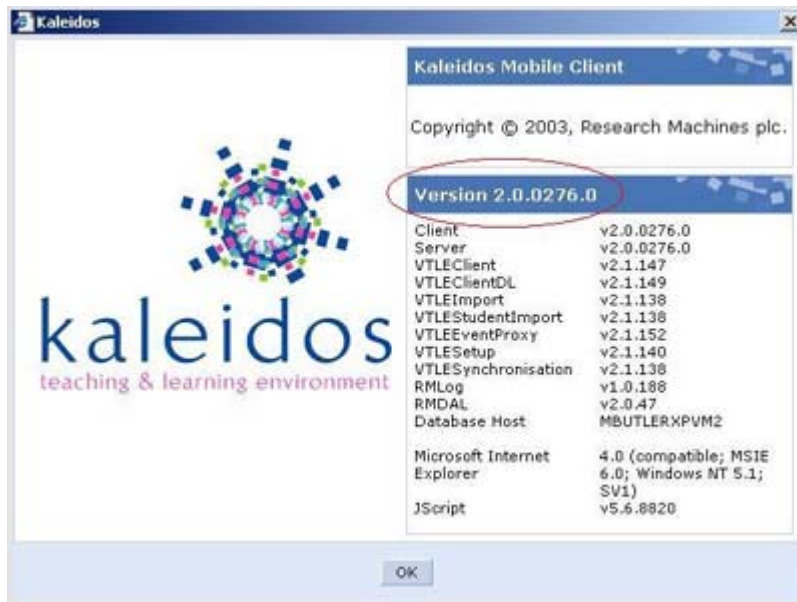
Title	Updates for Internet Explorer 7.0
Product	RM Math Framework Edition
Date	May 3, 2007
Associated File	Kaleidos v2.1.exe and Kaleidos IE 7 fix.exe

Currently there are issues when running Kaleidos alongside of Internet Explorer 7.0. The Kaleidos Internet Explorer fix will correct this problem. You must upgrade your current version of Kaleidos to v2.1 before installing the fix.

Determining your version of Kaleidos

In order to determine what version of Kaleidos you are running please follow these steps:

1. Log into Kaleidos
2. Click on the Help button and select About
3. The screen shown below appears. The version of Kaleidos you are running is highlighted below:



Requirements

1. Kaleidos v2.0 **must** already be installed on the machines you are upgrading
2. **Make sure you have completed a Full Synchronization and also created a Data Image Backup.** Both of these processes are described in the Kaleidos Help (tutorials)
3. Ensure all users are logged out of Kaleidos, and the Kaleidos application is closed (or a reboot of the server may be needed).
4. Make sure you have details to log on as an administrator to the machines you are upgrading
5. Make sure you have details to log on to Kaleidos as an admin user

Overview

The upgrade process involves the following steps:

The first three steps must all happen together, as the Server and Clients must be kept in line with each other.

Title	Updates for Internet Explorer 7.0
Product	RM Math Framework Edition
Date	May 3, 2007
Associated File	Kaleidos v2.1.exe and Kaleidos IE 7 fix.exe

1. Recommended - Backup Kaleidos before starting
2. Upgrade your Kaleidos Server(s) - at which point your Kaleidos Clients will be locked out until they are upgraded
3. Upgrade your Kaleidos Clients (workstations), as these will not work with the already upgraded server

The following steps can happen at a later date, as these machines are not affected by the change to the server in the school.

1. Upgrade any Mobile Clients (laptops and tablets)
2. Upgrade any Teacher Home installations

Upgrades on client/server networks

Important: You must follow the order detailed below - upgrading the server(s) first, then workstations second, as they will need to communicate with the upgraded database on the server.

1. Log on to the server that has the **Kaleidos Datastore (MSDE)** installed, as an administrative user and download Kaleidos v2.1 upgrade (**Kaleidos-2_1.exe**) to a shared temporary location where both server and stations are able to access the file.
2. Run the upgrade by double-clicking the self-extracting executable file (**Kaleidos-2_1.exe**). The upgrade will extract files automatically and install the upgrade.
3. When prompted, click **OK** to upgrade to v2.1.
4. The installation will proceed automatically and may take several minutes to complete. When prompted that Kaleidos was successfully upgraded, click **OK**.
5. **Repeat steps 1-4** above at all your other servers that have Kaleidos v2.0 installed.
6. At the server that has the **Kaleidos Datastore** installed **log on** to Kaleidos. This first log in may take longer than normal as the upgrade is detected and verified
7. Open the **Help Menu** and click About - Check that the Client and Server are both listed as **v2.1.0270.0**
8. For each workstation that has the Kaleidos Application installed, log on as an administrative user and browse to the location that the upgrade file is saved in (see above)
9. Run the upgrade by double-clicking the self-extracting executable file (**Kaleidos-2_1.exe**). The upgrade will extract files automatically and install the upgrade.
10. When prompted, click **OK** to upgrade to v2.1.
11. The installation will proceed automatically and may take several minutes to complete. When prompted that Kaleidos was successfully upgraded, click **OK**.
12. Then complete a synchronization by logging out of Kaleidos.

Note: You will be unable to use workstations for Kaleidos until they have been upgraded, however laptops and tablets will continue to work as they have their own Datastores. It is still advisable to upgrade these at your earliest convenience following the same steps for workstations above.

Title	Updates for Internet Explorer 7.0
Product	RM Math Framework Edition
Date	May 3, 2007
Associated File	Kaleidos v2.1.exe and Kaleidos IE 7 fix.exe

Upgrades on Mobile Clients

1. Log on to the computer as an administrative user and download the Kaleidos v2.1 upgrade to a temporary location (e.g. C:\temp).
2. Run the upgrade by double-clicking the self-extracting executable file (Kaleidos-2_1.exe). The upgrade will extract files automatically and install the upgrade.
3. When prompted, click OK to upgrade to v2.1.
4. The installation will proceed automatically and may take several minutes to complete. When prompted that Kaleidos has successfully upgraded, click OK.
5. Log in to Kaleidos as a teacher user - this first log in may take longer than normal as the upgrade is detected and verified.
6. Open the Help Menu and click About - Check that the Client and Server are both listed as v2.1.0270.0
7. Then complete a synchronization by logging out of Kaleidos

IE 7.0 Fix

1. You are now ready to install the Internet Explorer 7.0 fix.
2. Download to your computer's hard drive.
3. Double click to run the installer – let finish.
4. Load Kaleidos and you should now see the Kaleidos main screen displaying as normal.

Any Questions

If you have any questions about this article, or require further assistance, please do not hesitate to contact us via our toll-free Support Hotline at 1-866-728-6758. Our hours of operation are 8 AM to 5 PM (4:30 PM Fridays).